



sakumetall

INTERNAL STEEL HATCH Q

ver01

Recommended use

Used as internal hatch in rooms which are dry, heated, have no contact with chemicals and in an environment that is not corrosion inducing.

Dimensions

Maximum dimensions of the hatch frame are 1420 x 2910 mm and minimum dimensions are 450 x 500 mm.

Properties

Sound insulation R_w , EN ISO 140-3, EN ISO 717-1*	34 dB
Resistance to repeated opening and closing, EN 1191, class*	5; 100000 cycles

*Declared values depend on the size of the hatch.

Construction

Hatch leaf is 64 mm thick. Rebates are at all sides. External and internal sides are made of 1,0 mm electro galvanized steel sheet. Insulation material is mineral wool. There are 2 hinges with ball bearings.

Frame is made of electro galvanized steel sheet profiles with a thickness of 1,5 mm, connected at the corners with welds. Frame can be ordered with cover slat covering lateral installation slots (type YM) or without cover slat for recessed installation (type YS). Seal is made of TPE rubber and is fitted into the groove of the frame.

Finish

Hatch is coated with polyester powder coating. Standard tones are RAL7001 (silver gray), RAL7024 (graphite grey), RAL8014 (sepia brown), RAL9006 (white aluminum) and RAL9010 (pure white). Alternatively the hatch can be painted with epoxy primer and two component polyurethane paint in all the tones of RAL catalogue.

Locks

Hatches can be equipped with locks from well known companies such as Abloy, Boda, Assa and Nemef.

Installation

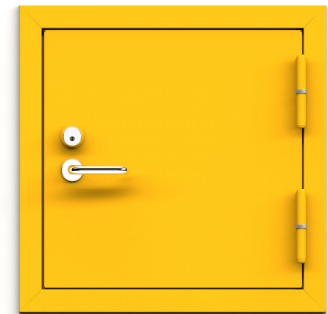
Frame is fixed from at least four points. Fixing apertures are covered with plastic plugs. Installation gap will be filled with mineral wool or construction foam after fixing. Package includes fixings and plugs. For more details see installation manual.

Accessories

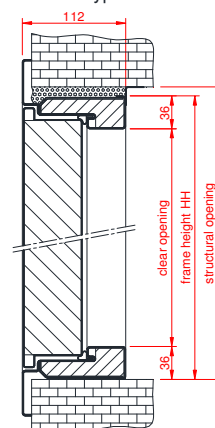
- window, peephole, ventilation grill
- lock case, core, core covers, door handle, door closer
- border slats

Maintenance

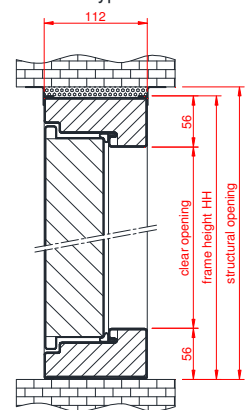
Hatch must be checked and maintained at least once every six months. Check closing of hatch and operation of locking elements. Detailed information is available in maintenance manual. It is possible to sign a maintenance contract upon purchasing the hatch.



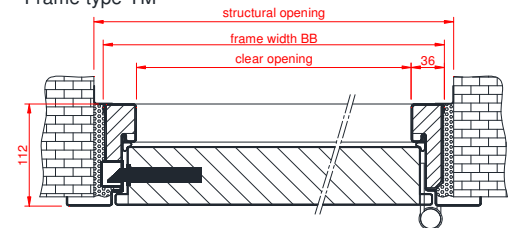
Frame type YM



Frame type YS



Frame type YM



Frame type YS

