



**FIRE-RESISTANT STEEL DOOR FQ100 EI₂120,
DOUBLE LEAF**

ver01

Recommended use

External door used between fire stop sections in industrial buildings, dwellings and office buildings, where fire resistance class of the door must be EI₂120.

Dimensions

Maximum dimensions of the door frame are 2780 x 2380 mm or 2320 x 2850 mm.

Certificate of conformity

Fire-resistance has been tested in testing laboratory of TÜV Eesti OÜ in Tallinn according to standard EN 16034:2014 with a certificate ET-0210-18 and fire-resistance class EI₂120.

Construction

Door leaf is 100 mm thick. Rebates are at the sides and at the top. External and internal sides are made of 1,0 mm hot-dip galvanized steel sheet. Insulation material is fire-resistant mineral wool. Rigidity of the door leaf is achieved via gluing together the metal and the insulation material. There are at least 4 hinges with ball bearings.

Frame is made of hot-dip galvanized steel sheet profiles with a thickness of 1,5 mm. Insulation material is fire-resistant mineral wool. Frame can be ordered with cover slat covering lateral installation slots (type YM) or without cover slat for installation deeper than wall surface (type YS). Seal is made of silicone rubber and is fitted into the groove of the frame.

Threshold is made of hot-dip galvanized or painted steel sheet. Also available without a threshold.

Finish

Door is coated with polyester powder coating. Standard tones are RAL7001 (silver gray), RAL7024 (graphite grey), RAL8014 (sepia brown), RAL9006 (white aluminum) and RAL9010 (pure white). Alternatively the door can be painted with epoxy primer and two component polyurethane paint in all the tones of RAL catalogue.

Locks

Certified EI120 fire-resistant locks by Abloy and Assa can be installed to the door.

Installation

Frame is fixed from ten points. Threshold is fixed from the middle. Fixing apertures are covered with plastic plugs. Installation gap will be filled with mineral wool after fixing. Package includes fixings and plugs. For more details see installation manual.

Accessories

Stainless steel threshold, gradient threshold, drop down seal, border slats, foot sheet, lock case, core, core covers, door handle.

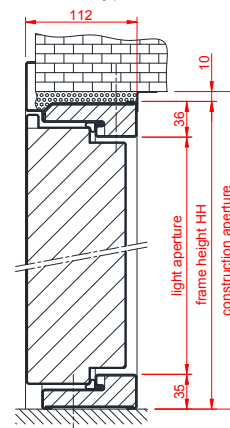
Door closer with non-detachable arm must be installed to the door located in evacuation path.

Maintenance

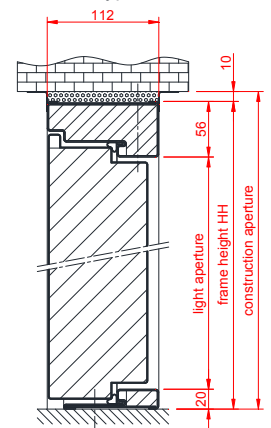
Door must be checked and maintained at least once every six months. Check closing of door and operation of locking elements. Detailed information is available in maintenance manual. It is possible to sign a maintenance contract upon purchasing the door.



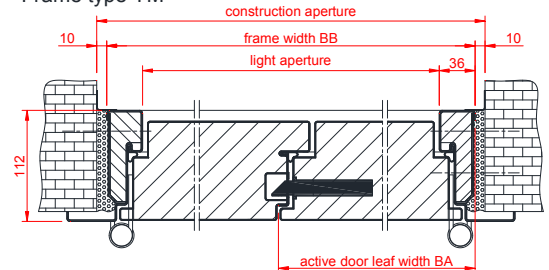
Frame type YM



Frame type YS



Frame type YM



Frame type YS

