



sakumetall

FIRE-RESISTANT EXTERNAL SECURITY STEEL DOOR FQ EI₂60

BURGLAR RESISTANCE RC3

ver01

Recommended use

Internal security door used between fire stop sections in industrial buildings, dwellings and office buildings, where fire resistance class of the door must be EI₂60 and security class 3.

Dimensions

Fire resistance class maximum dimensions of the door frame are 2490x2085mm or 2170x2390mm. Burglar resistance class maximum dimensions of the door frame are 2520x2628mm. Permitted to use glazing.

Certificate of conformity

Fire-resistance has been tested in testing laboratory of TÜV Eesti OÜ in Tallinn according to standard EN 1634-1:2008 and certified by Kiwa OÜ in accordance with the standard EN 16034:2014 and fire-resistance class EI₂60.

Burglar resistance has been tested in testing laboratory of Eurofins Expert Services and certified by SBSC in accordance with the standard EN 1627:2021. Burglar resistance is from the opening side.

Properties

Resistance to repeated opening and closing, EN 1191, class	200000 cycles, C5
Sound insulation: Rw; EN ISO 10140-2, EN ISO 717-1	41 dB
Smoketightness, EN 1634-3, class	S _a / S ₂₀₀
Watertightness, EN 1027, class*	3A
Air permeability, EN 1026, class*	4
Thermal transmittance, EN 10077*	1,58 W/(m ² K)

Construction

Door leaf is 64 mm thick. Rebates are at the sides and at the top. External side is made of 1,5 mm and internal side of 1,0 mm hot-dip galvanized steel sheets connected with rivets. Insulation material is fire-resistant mineral wool. Rigidity of the door leaf is achieved with security elements and via gluing together the metal and the insulation material. There are 2 hinges with ball bearings. Door leaf is secured with 3 security pins.

Frame is made of hot-dip galvanized steel sheet profiles with a thickness of 1,5 mm, connected at the corners with screws and rivets. Insulation material is fire-resistant mineral wool. Frame can be ordered with cover slat covering lateral installation slots (type YM) or without cover slat for installation deeper than wall surface (type YS). Seal is made of silicone rubber and is fitted into the groove of the frame.

Threshold is made of hot-dip galvanized steel sheet.

Finish

Door is coated with polyester powder coating. Standard tones are RAL7001 (silver gray), RAL7024 (graphite grey), RAL8014 (sepia brown), RAL9006 (white aluminum) and RAL9010 (pure white). Alternatively the door can be painted with epoxy primer and two component polyurethane paint in all the tones of RAL catalogue.

Locks

SBSC approved main-locks need to be used. For example Assa 410 with 1490-11. Permitted to use fire-resistant additional locks by Assa, Abloy etc. For more information contact our sales team.

Installation

Frame is fixed from eight points with steel sleeves and screws. Fixing apertures are covered with plastic plugs. Installation gap will be filled with mineral wool or construction foam after fixing. Package includes fixings and plugs. For more details see installation manual.

Accessories

Stainless steel threshold, gradient threshold, border slats, peephole, kick-plate, lock case, cylinder with covers, door handle.

Door closer with non-detachable arm must be installed to the door located in evacuation path. Door closer Abloy DC335BC can be used.

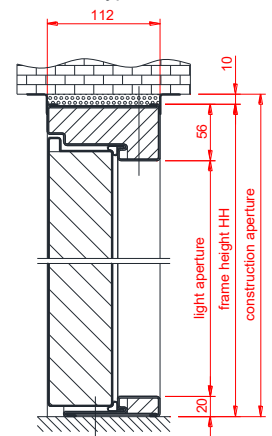
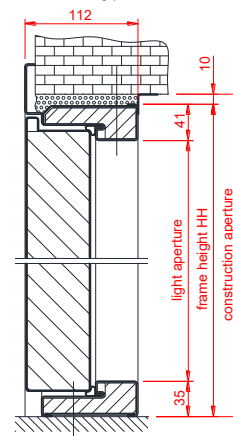
Maintenance

Door must be checked and maintained at least once every six months. Check closing of door and operation of locking elements. Detailed information is available in maintenance manual. It is possible to sign a maintenance contract upon purchasing the door.

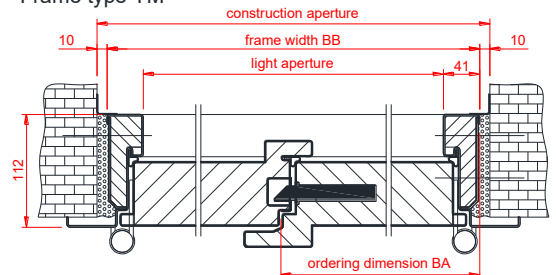


Frame type YM

Frame type YS



Frame type YM



Frame type YS

