



sakumetall

**FIRE-RESISTANT EXTERNAL SECURITY STEEL DOOR  
FQ EI<sub>260</sub>, RESISTANCE CLASS 3, OUTWARD OPENING  
TWO-SIDED**

ver03

**Recommended use**

Internal security door used between fire stop sections in industrial buildings, dwellings and office buildings, where fire resistance class of the door must be EI<sub>260</sub> and security class 3.

**Dimensions**

Maximum dimensions of the door frame are 1545 x 2282 mm. Maximum dimension of active door leaf (BA) is 935 mm.

**Certificate of conformity**

Fire-resistance has been tested in testing laboratory of TÜV Eesti OÜ in Tallinn according to standard EN 1634-1:2008 and certified by Inspecta Estonia OÜ in accordance with the standard EN 16034:2014 with a certificate ET-0212-18 and fire-resistance class EI<sub>260</sub>.

Burglar resistance has been tested in testing laboratory of Kaunas University of Technology in accordance with the standard EN 1627:2011. Burglar resistance class 3 is from the opening side.

**Properties**

Resistance to repeated opening and closing, EN 1191, class	100000 tsükliit, C4
Sound insulation: Rw; EN ISO 10140-2, EN ISO 717-1	41 dB
Smoketightness, EN 1634-3, class	S <sub>a</sub> / S <sub>200</sub>

**Construction**

**Door leaf** is 64 mm thick. Rebates are at the sides and at the top. External side is made of 1,5 mm and internal side of 1,0 mm hot-dip galvanized steel sheets connected with rivets. Insulation material is fire-resistant mineral wool. Rigidity of the door leaf is achieved with security elements and via gluing together the metal and the insulation material. There are 2 hinges with ball bearings. Door leaf is secured with 3 security pins.

**Frame** is made of hot-dip galvanized steel sheet profiles with a thickness of 1,5 mm, connected at the corners with screws and rivets. Insulation material is fire-resistant mineral wool. Frame can be ordered with cover slat covering lateral installation slots (type YM) or without cover slat for installation deeper than wall surface (type YS). Seal is made of silicone rubber and is fitted into the groove of the frame.

**Threshold** is made of hot-dip galvanized steel sheet.

**Finish**

Door is coated with polyester powder coating. Standard tones are RAL7001 (silver gray), RAL7024 (graphite grey), RAL8014 (sepia brown), RAL9006 (white aluminum) and RAL9010 (pure white). Alternatively the door can be painted with epoxy primer and two component polyurethane paint in all the tones of RAL catalogue.

**Locks**

A combination of Abloy LC200 with LP712 and Abloy LC211 with LP711 locks must be installed.

**Installation**

Frame is fixed from eight points with steel sleeves and screws. Fixing apertures are covered with plastic plugs. Installation gap will be filled with mineral wool or construction foam after fixing. Package includes fixings and plugs. For more details see installation manual.

**Accessories**

Stainless steel threshold, gradient threshold, border slats, peephole, security chain, foot sheet, lock case, core, core covers, door handle.

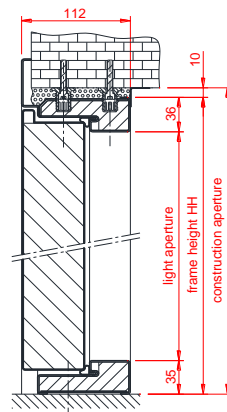
Door closer with non-detachable arm must be installed to the door located in evacuation path. Door closer Abloy DC335BC can be used.

**Maintenance**

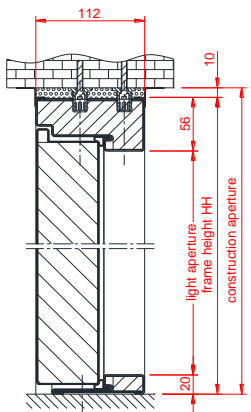
Door must be checked and maintained at least once every six months. Check closing of door and operation of locking elements. Detailed information is available in maintenance manual. It is possible to sign a maintenance contract upon purchasing the door.



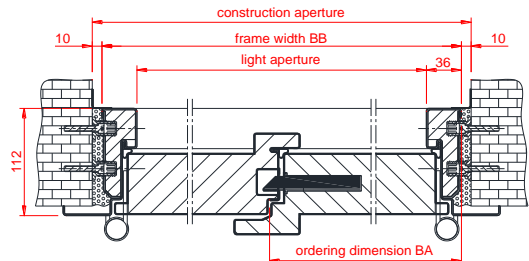
Frame type YM



Frame type YS



Frame type YM



Frame type YS

