



sakumetall

**FIRE-RESISTANT EXTERNAL STEEL DOOR FQ EI<sub>2</sub>60  
TWO-SIDED, OUTWARD OPENING**

ver05

**Recommended use**

External door used in industrial buildings, dwellings and office buildings, where fire resistance class of the door must be EI<sub>2</sub>60.

**Dimensions**

Maximum dimensions of the door frame (width x height) are 2170 x 2300 mm or 2390 x 2080 mm. Maximum dimension of active door leaf (BA) is 1195 mm.

**Certificate of conformity**

Fire-resistance has been tested in testing laboratory of TÜV Eesti OÜ in Tallinn and certified by Inspecta Estonia OÜ in accordance with the standard EN 16034:2014 with a certificate 1336-CPR-0209 and fire-resistance class EI<sub>2</sub>60.

**Properties**

Watertightness, EN 1027, class*	4A
Air permeability, EN 1026, class*	2
Resistance to wind load, EN 12211, class*	C2
Resistance to repeated opening and closing, EN 1191, class*	200000 cycles, C5
Sound insulation: Rw; EN ISO 717-1*	41 dB
Thermal transmittance, EN 10077*	1,54 W/(m <sup>2</sup> K)

\*Declared values depend on the size of the door.

**Construction**

**Door leaves** are 64 mm thick. Rebates are at the sides and at the top. External and internal sides are made of 1,0 mm electro galvanized steel sheets. Insulation material is fire-resistant mineral wool and mineral plate. Rigidity of the door leaf is achieved via gluing together the metal and the insulation material. There are at least 2 hinges per leaf with ball bearings. Between the hinges is a security pin.

**Frame** is made of electro galvanized steel sheet profiles with a thickness of 1,5 mm. Insulation material is fire-resistant mineral wool. Frame can be ordered with cover slat covering lateral installation slots (type YM) or without cover slat for installation deeper than wall surface (type YS). Seal is made of silicone rubber and is fitted into the groove of the frame.

**Threshold** is made of hot-dip galvanized steel sheet.

**Finish**

Door is coated with zinc primer and polyester powder coating. Standard tones are RAL7001 (silver gray), RAL7024 (graphite grey), RAL8014 (sepia brown), RAL9006 (white aluminum) and RAL9010 (pure white). Alternatively the door can be painted with epoxy primer and two component polyurethane paint in all the tones of RAL catalogue.

**Locks**

Certified fire-resistant locks by Abloy, Boda, Assa, and Nemef can be installed to the door.

**Installation**

Frame is fixed from eight points. Threshold is fixed from the middle. Fixing apertures are covered with plastic plugs. Installation gap will be filled with mineral wool or construction foam after fixing. Package includes fixings and plugs. For more details see installation manual.

**Accessories**

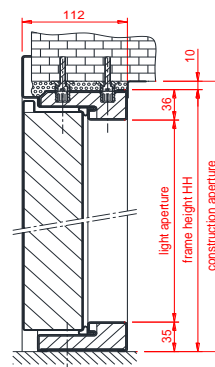
Stainless steel threshold, gradient threshold, border slats, peephole, security chain, foot sheet, lock case, core, core covers, door handle. Window with maximum dimensions of 575 x 535 mm or 495 x 625 mm. Door closer with non-detachable arm must be installed to the door located in evacuation path. Door closer Abloy DC335BC can be used.

**Maintenance**

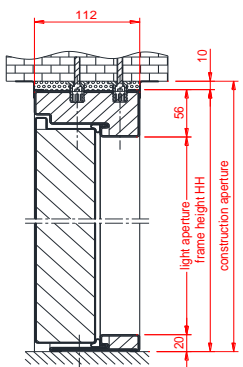
Door must be checked and maintained at least once every six months. Check closing of door and operation of locking elements. Detailed information is available in maintenance manual. It is possible to sign a maintenance contract upon purchasing the door.



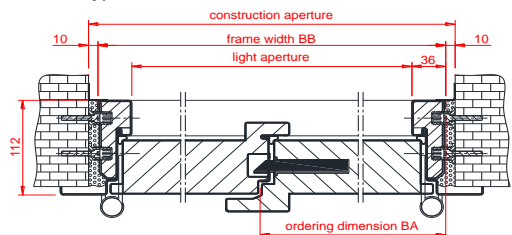
Frame type YM



Frame type YS



Frame type YM



Frame type YS

