

## FIRE-RESISTANT SECURITY STEEL DOOR EI30 & RC3

The Internal security door is used mostly in apartment buildings, where the fire resistance class of the door must be EI30 and security class 3. Rooms must be dry, heated, have no contact with chemicals and no environment that is receptive to corrosion



### Door features - outward opening

Width	max, mm	1170
Height	max, mm	2280
Fire resistance	EN 16034, class	EI30
Burglary resistance	EN 1627, class	RC3
Smoke tightness	EN 1634-3, class	Sa / S200
Sound insulation	EN ISO 717-1, dB	36
Water tightness	EN 1027, class	npd <sup>1</sup>
Air permeability	EN 1026, class	npd <sup>1</sup>
U-value	EN 10077, W/(m <sup>2</sup> K)	npd <sup>1</sup>
Wind resistance	EN 12211, class	npd <sup>1</sup>
Corrosion resistance	EN ISO 6270-2, class	C3
Resistance to repeated opening and closing	EN 1191, class	C4

<sup>1</sup> no performance declared

<sup>2</sup> double-leafed door

<sup>3</sup> optional



### Finish

- Painted - RAL Classic and NCS color charts
- Stainless steel
- Laminated

[RAL Classic >](#)

[NCS Colors >](#)

## Construction

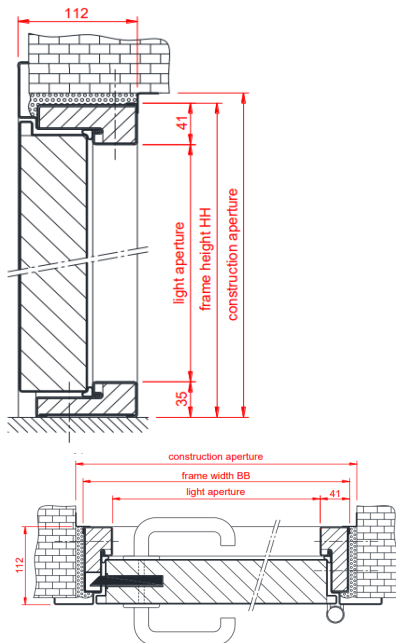
Door leaf thickness	64 mm
Door material	1 and 1,5 mm hot-dip galvanized steel
Door reinforcement	3 security pins
Door insulation	fire-resistant materials
Hinges	2 hinges with ball bearings
Frame material	1,5 mm hot-dip galvanized steel sheet
Frame insulation	fire-resistant mineral wool
Frame options	with cover slat (type YM); without cover slat (type YS)
Gasket	fire-resistant silicone
Locks	ASSA 410-50

## Accessories

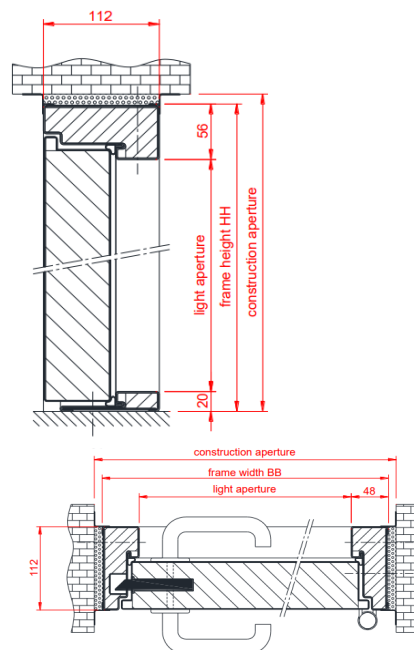
- Stainless steel threshold
- Hot-dip galvanized threshold
- Stainless steel kick plates
- Lock cases & strikers
- Door closers and automatics
- Door handles
- Pull handles
- Stainless steel hinges

## Drawings

### ■ Frame type YM



### ■ Frame type YS



Contact sales for custom solutions and additional information

Contact >



Please find product certificates on our website

Certificates >



Please find installation and maintenance instructions on our website

Instructions >