










Installation manual for profile sliding door



Attention! General warnings!

A Series of precautions must be taken to install this product. For safety reasons pay attention to following warnings and instructions! In case of doubt contact the supplier. This manual is meant for experienced installer.

-  Read this manual carefully before installation.
-  Protective gloves are recommended.
-  Parts of the product are heavy.
-  All that is necessary to install this product is included in the package except insulation material between the wall and the frame and support blocks. Adding other elements may affect safety and warranty.
-  Make sure that there is enough light in the installation area. Remove items not necessary and dirt. Unauthorized persons (especially children!) may get hurt if present.
-  Make sure that the wall is strong enough for installation. In case of doubt contact the constructor.
-  When using mounting frame, make sure that it is installed properly to the load-bearing structures of the building.

In case of questions contact AS Saku Metall Uksetehas.



TABLE OF CONTENT

1 PRODUCT TYPES	2
2 INSTALLATION	2
2.1 Fixtures	2
2.2 Order of installation for sliding door	3
2.2 Order of installation for locking components and sliding door operator	4

1 PRODUCT TYPES

This installation manual covers only following steel profile products:

1. Steel profile sliding door Forster Norm products.

2 INSTALLATION

2.1 Fixtures

Typical fastener variants according to the wall types are shown in Table 1. When fixing into concrete, concrete masonry, brick, lightweight concrete, or wood, select the length of the screw so, that the screw thread reaches at least 50 mm into the wall.

The frame may also be fixed to the steel constructions, with self-tapping screws, with a minimum diameter of 6 mm. The length of the screws must be selected so, that its thread passes through the steel profile by at least 10 mm.

Table 1 Typical fasteners variants according to wall types

Wall type	Fastener variants
Concrete, concrete masonry or brick	Concrete screw $\varnothing 10,5 \times 110$ (e.g. THDEX 10110)
	Concrete screw $\varnothing 7.5 \times 92$ (e.g. Essve 105287)
	Screw $\varnothing 8 \times 100$ (e.g. Würth W-1192-8-100) + plastic wall plug
Lightweight concrete	Concrete screw $\varnothing 10,5 \times 110$ (näiteks THDEX 10110)
	Concrete screw $\varnothing 7.5 \times 92$ (e.g. Essve 105287)
	Light concrete screw $\varnothing 8 \times 120$ (e.g. Essve 105232)
	Screw $\varnothing 8 \times 100$ (e.g. Würth W-1192-8-100) + plastic wall plug
Steel	Self-tapping screw $\varnothing 7 \times 45$ TX30 (e.g. Essve 105379)
	Self-tapping screw $\varnothing 6.3 \times 50$ -120 hexagon (e.g. Würth W-0214-63-50)
Wood	Wood screw $\varnothing 6 \times 65$ TX30 (e.g. Essve 105294)

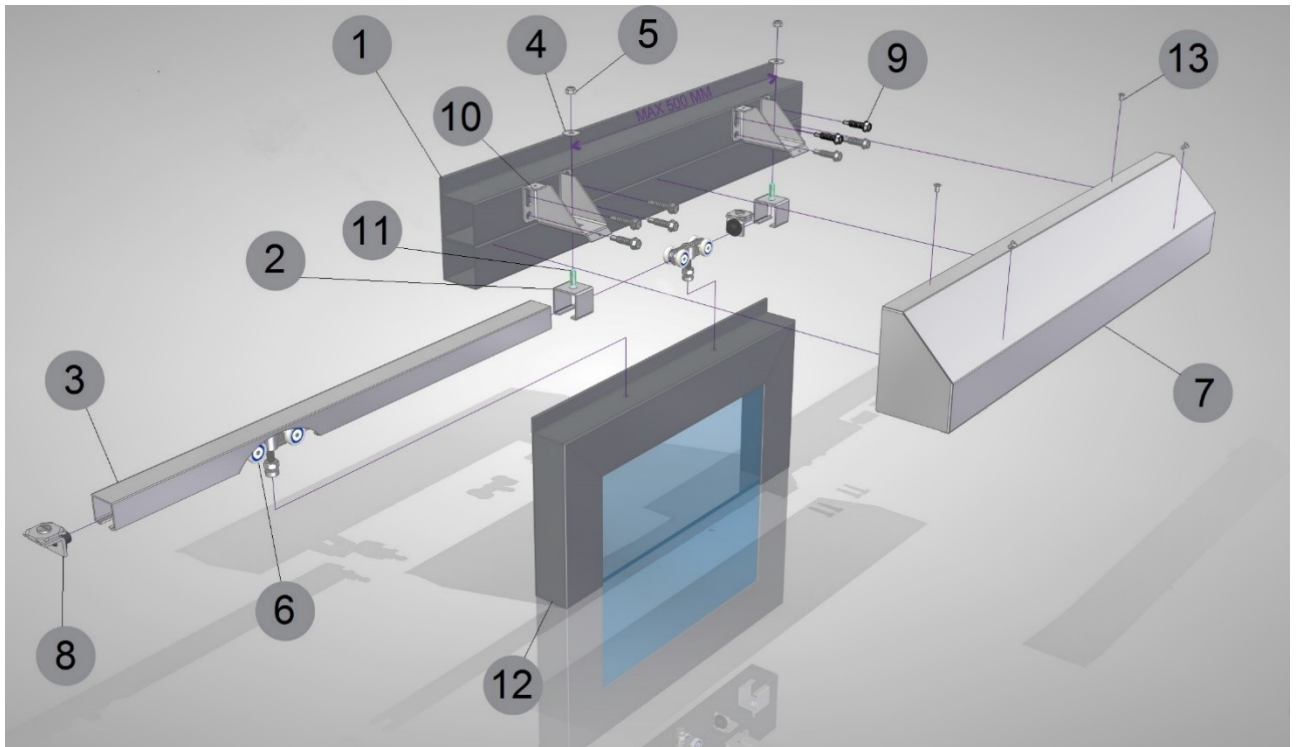
2.2 Order of installation for sliding door

Figure 1 Components of profile sliding door

Table 2 Components of profile sliding door

POS nr	Detail/Part	POS nr	Detail/Part
1	Wall section 	8	Stop KPP-075 
2	Wall bracket K-075 	9	Self-tapping screw 6,3x32 
3	Track K-075 	10	Tracker carrier K-075 
4	Washer wide M6x20 	11	Socket countersunk screw M6x20 
5	Nylock nut M6 	12	Sliding door 
6	Hanger MP-075 	13	Rivet 
7	Cover 		



1. When placing components on the floor, use cardboard, rubber or plastic material to protect the paint layer.
2. Check the preparation of construction aperture. The greatest allowed width of construction aperture from frame is +30 mm and height +30 mm. In case of larger gaps bring the construction aperture into compliance with the required dimensions.
3. Check the presence of fixings and tools.
4. Start installing tracker carrier system. Drill top holes for tracker carrier (10). Check, that the holes are alligned. The maximum distance between two carriers may be 600 mm.
5. Measure the track (3) and cut it to the right length.
6. Install the tracker carriers (10) with self-tapping screws 6,3x32 (9) or etc.
7. Install the wall brackets (2) with screw (11), washer (4) and nut (5) to the carrier (10).
8. Slide the track (3) in to the wall brackets (2).
9. Check that the track (3) is levelled and parallel to the wall. Adjust from the tracker carrier (10), if needed.
10. Slide the hangers (6) in to the track (3).
11. Place the sliding door in front of the door opening, 10 mm from the wall. Place 10 mm support blocks under the sliding door for distance. Fix the hangers (6) to the sliding door predrilled holes. Tighten the hanger (6) nuts to the point, that the sliding door supports itself and it is 10 mm from the floor.
12. Install the stoppers (8) to each side of the track (3).
13. Check that the sliding door moves freely in the track. Check that the door is levelled. Adjust from the hangers (6) nuts, if needed.
14. If the product comes with a locking post, fix it to the wall. Close the mounting holes with plastic caps.
15. Install the floor guide AOL-12 on the opposite side of door handle, on to the ground. Make sure, that the door leaf is parallel to the wall and the gap between wall and door leaf is 10 mm.
16. If the door moves freely and everything is parallel and levelled, then fix the lower screws to the tracker carrier (10). If needed, adjust stoppers (8) and tighten the screws.
17. Install the cover (7) to the tracker carrier (10) with rivets (13) or self-tapping screws.
18. If it is not possible to place the locking post completely against the wall/installation frame and there is a gap between the locking post and the wall, it must be filled with sealing material using mounting foam.
19. Sealed gaps must be covered with steel sheets, plaster mixture or construction boards.
20. Check the movement of the door leaf.

2.2 Order of installation for locking components and sliding door operator

1. Install locking components according to the installation manual for the locking components.
2. Install flush sliding door handles with rivets.
3. Install the operator according to operator installation manual.

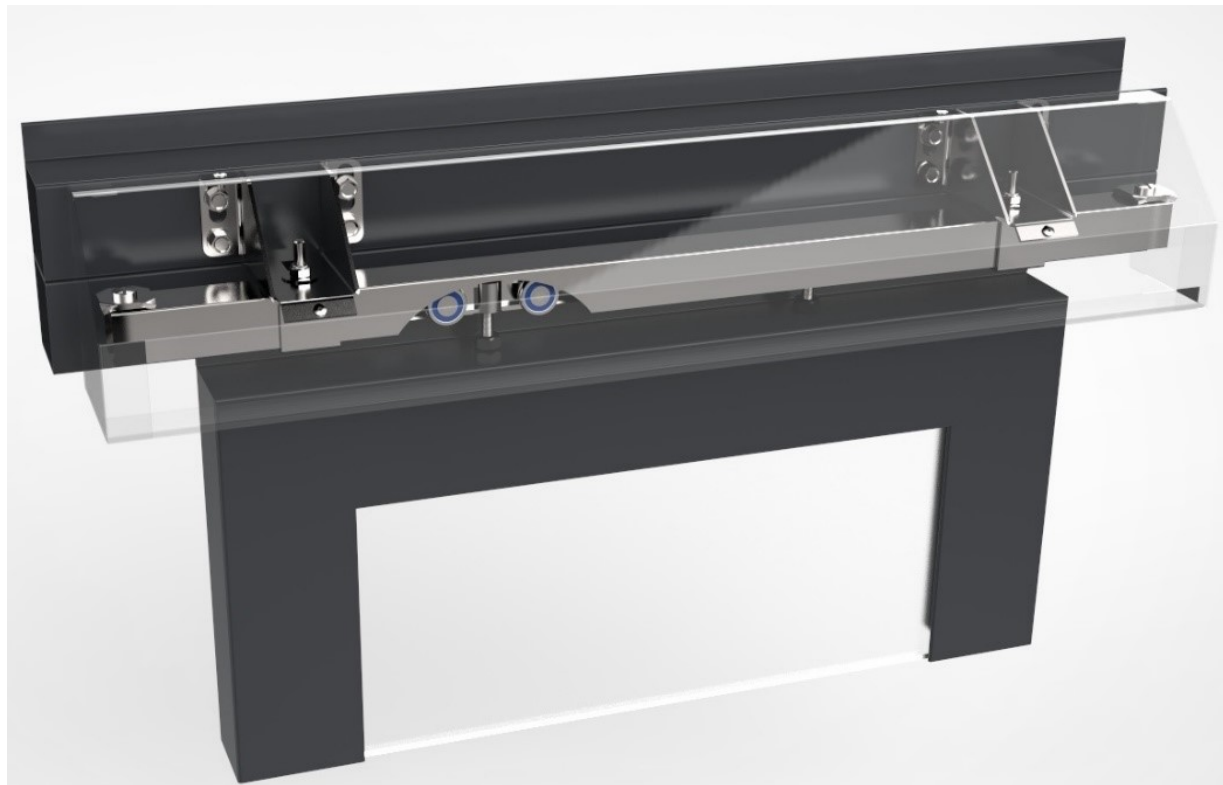


Figure 2 Profile sliding door Forster Norm